

April 10, 2016

To: Chris Lee

Project Updates: WPCP Video, Watercraft Inspector Training and New Zealand Mudsnaills

The video projects are proceeding. I expect several to be completed in May depending upon clarity in the creek, selection of the vast amount of media that I filmed (pro bono) during the construction of the WPCP, and completion of the introductions. I have provided below a small variety of clips taken out of the HD 720p video captured during the project. You will certainly have access to a wide variety of the still shots if needed for presentations, reports, etc. The first four images below were all taken from video captured within Phase 3. I already have, or will be capturing footage that matches much of the existing footage. I'm also initiating a new feature of Photoshop that will allow me to put the sequential images taken off the Winters Bike Bridge into a HD time-lapse video.

Also note the New Zealand Mudsnaill congregation near the Morales property that is about 5 inches deep. It's not extensive, just deep. See the photo in this report. More on this next week after I return from Idaho.



Alex working in dewatered section of Phase 3 (WPCP) 10-30-2011

Phase 3 WPCP:

Image cut from HP 720p video. Shows Alex and assistants working in the de-watered section of Phase 3 during the WPCP construction project. Video includes Alex explaining the purpose of his work in Phase 3. Several angles of this scene are available.



Pipes in the dewatered section of Phase 3 (WPCP) 10-30-2011

Phase 3 WPCP:

Image cut from HP 720p video. Shows pipes that carried the creek water through the Phase 3 of the WPCP project area. We will be matching this shot with a recently shot image.



Phase 3 WPCP:

Image cut from HP 720p video. Site is lower section of Phase 3. The earthmover was crossing the project at the vehicle crossing between Phase 3 and Phase 2. In 2015, salmon spawned (and were filmed) in almost the exact spot where the earthmover is sitting.

Pipes in the dewatered section of Phase 3 (WPCP) 10-30-2011



Phase 3 WPCP:

Image cut from HP 720p video. Shows pipes in the upper section of Phase 3.

Pipes in dewatered section of Phase 3 (WPCP) 10-30-2011



WPCP:

Image cut from HP 720p video. Shows dirt being loaded and moved from the staging area to the Phase 2 section.

Loading dirt for Phase 2.



Earthmover complete with HD sound.

Phase 3 WPCP:

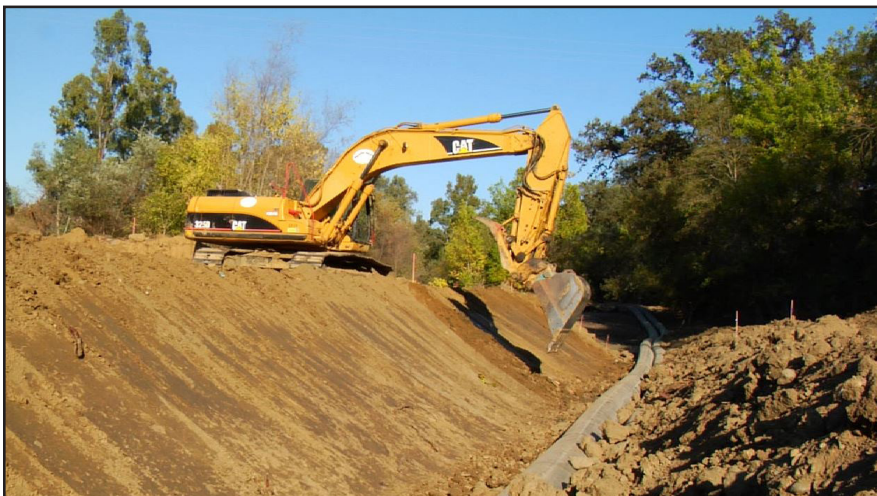
Image cut from HP 720p video. Shows earthmover carrying soil from the staging area to the Phase 2 section. Sound also recorded.



Phase one pipes with old Winters Car Bridge.

Phase 1 WPCP:

Image cut from HP 720p video. Shows pipes that carried the creek water through the project. Site is in Phase 1 near the Neil Crossing. Planning on capturing current video that matches this footage.



Cleaning up the banks of the new channel. Phase 2.

Phase 2 - WPCP:

Image cut from HP 720p video. Shows construction crew working on the banks section of Phase 2.

REPORT 5257 **(Update)**



Re-wetting the creek bed - Phase One

Phase 1 WPCP:

Image cut from HP 720p video. Shows pipes that re-wetted the creek bed prior to the removal of the transfer pipes.



Re-wetting the creek bed with pipes. Neil Crossing

Phase 1 WPCP:

Image cut from HP 720p video. Shows pipes still within the creek channel near the Neil Crossing. Matching images will be available. Salmon spawned (and filmed) at this site during the 2015 salmon run.



Re-wetted creek bed.

Phase 1 WPCP:

Image cut from HP 720p video. Shows pipes still within the creek channel prior to removal. Near the Neil Crossing. Salmon spawned in this area during the 2015 salmon run.

REPORT 5257 **(Update)**



Cutting pipes.

Phase 1 WPCP:

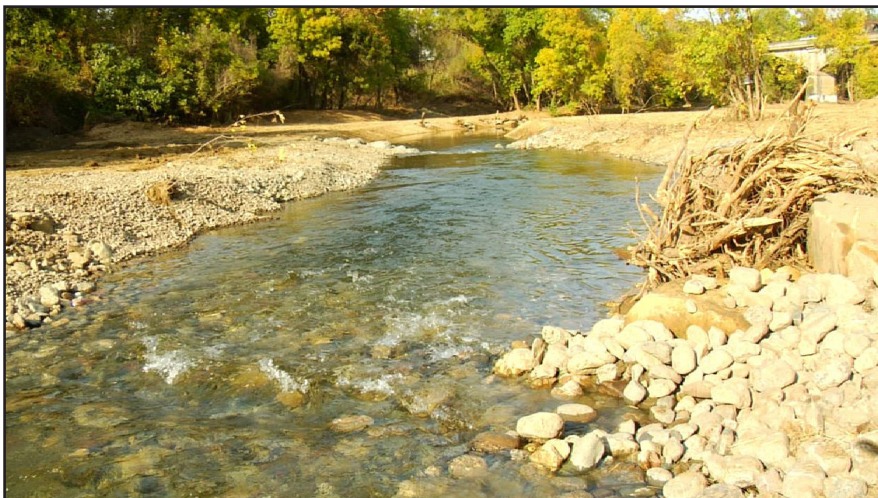
Image cut from HP 720p video. Shows construction crew cutting the pipes with a chain saw prior to removing the pipes.



Removing water conveyance pipes

Phase 1 WPCP:

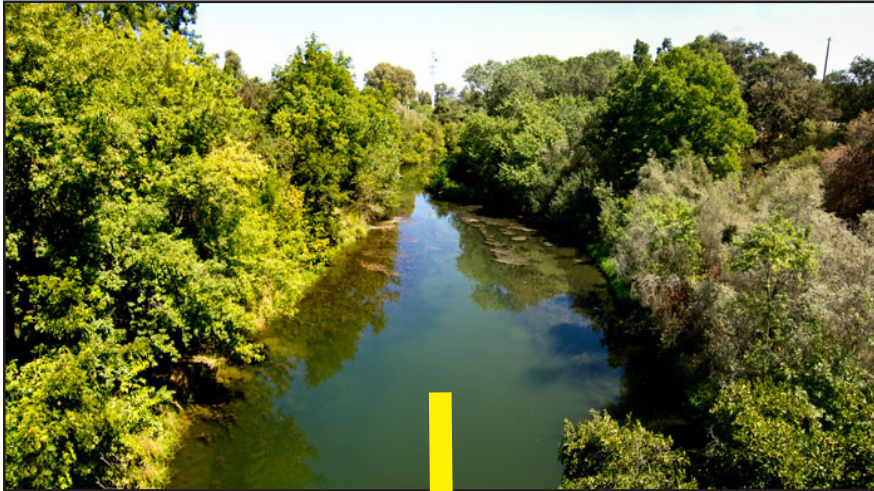
Image cut from HP 720p video. Video show the pipes being removed from the creek.



Neil Crossing and weir.

Phase 1 WPCP:

Image cut from HP 720p video. Shows the Neil Crossing after the pipes were removed and flow was returned to the creek bed. We will have current video that matches this video. The old Winters car bridge can be seen in the upper right corner.



Sequential images from the Winters Bike Bridge:

Relatively new Adobe Photoshop technology will allow me to put these images together into a time-lapse video. It will be available for stand-alone use and/or inclusion into the PR video program.



Avian Restoration Video:

Image cut from HP 720p video. Melanie Truan has agreed (in concept) to introduce the Putah Creek Avian Restoration video.

Flycatcher - Western Kingbird at Nut Tree Mitigation Area.

REPORT 5257 **(Update)**



Handful of New Zealand Mudsnails

New Zealand Mudsnails:

The image left is a simple handful of New Zealand Mudsnails. Not sure what is happening in the Lower Creek (Morales Section). In some areas, the mudsnails are in groups that reach about 5 inches deep. I have checked 10 other sites (last week) from Monticello Dam through the WPCP and saw nothing even close to this occurrence. More later after some investigation.



Watercraft decontamination at Lake Mead. Level 2 Certification

Watercraft Inspector Training and Certification:

I will be out of state for the initial training for the Watercraft Inspector Training so I have arranged for Jason Jordan (USBR) to show the interns and USBR rangers the video provided by the PSMFC. I will complete their training and certification during the first week of May.

Submitted via e-mail April 17, 2016



Ken W. Davis.
Aquatic biologist / Wildlife Photojournalist
Wildlife Survey & Photo
2443 Fair Oaks Blvd. # 209
Sacramento, CA 95825
(916) 747-8537
ken@creekman.com
www.creekman.com